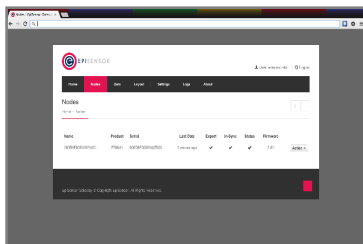


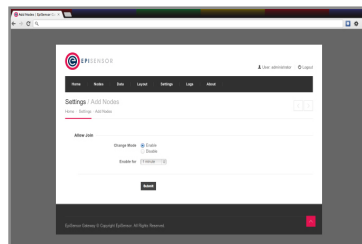


FEATURES

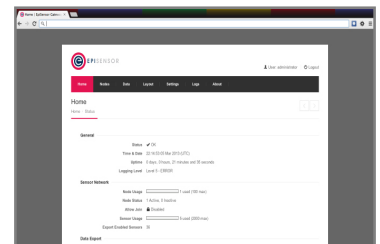
- › Built-in web interface
- › Designed for single or multi-site monitoring systems
- › Easy-to-use
- › Remote software upgrade capability
- › Multiple data export options (CSV, JSON, XML)
- › Accurate on-board RTC
- › Reliable embedded operating system
- › Ethernet and optional Cellular Modem
- › ZigBee® wireless communications
- › Industrial temperature range
- › Dimensions: 62mm x 115mm x 25mm
- › Fanless industrial enclosure
- › Wall mounting brackets available



Nodes List



Add Nodes

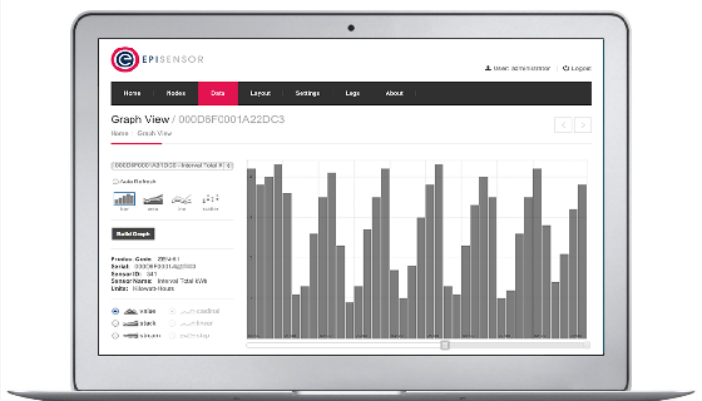


Home

INTRODUCTION

EpiSensor's NGR-30-3 Gateway manages networks of EpiSensor wireless nodes and provides users with an intuitive web interface to quickly and easily deploy the wireless monitoring system. From this interface, various types of data export can be configured to push energy usage and environmental data to third party software applications for archiving analysis.

An embedded industrial computer with redundancy and reliability at its core, the EpiSensor's Gateway enables users to configure and commission all EpiSensor wireless monitoring products.



PRODUCT PHOTOS



SPECIFICATIONS

Ordering Code	NGR-30-3	Ethernet
System	Processor RAM Storage Operating System	1GHz ARM A8 512MB 2GB (50% available for data storage) Embedded Linux
Data Export	CSV JSON XML Google Fusion Tables	push via (S)FTP / local storage push via HTTP(S) / local storage push via HTTP(S) / local storage SQL inserts to GFT via HTTPS
WAN Connectivity	Ethernet ZigBee	Ethernet via RJ-45 2.4GHz ZigBee Radio
Certification	Certification	CE, FCC (see user guide for more information)
ZigBee Specification	Radio Technology Radio Frequency Channels Max Tx Power Rx Sensitivity Data Rate Indoor Range (Sensor Network) Outdoor Range (Sensor Network) Encryption (Sensor Network)	ZigBee Pro 2.4 Ghz ISM Band 16 Channels (11 - 26) +3dBm (+5dBm in Boost Mode) -98dBm @ 1% Packet Error Rate up to 250 kbits/sec up to 50m up to 300m (direct line of sight) 128-bit AES Encryption
Physical	Dimensions (LxWxH) Weight Mounting Enclosure Operating Temperature Operating Humidity	62 x 115 x 25 mm 0.22kg Wall Mounting Velcro Pads available Coated Steel 0°C to +50°C up to 80% (non-condensing)